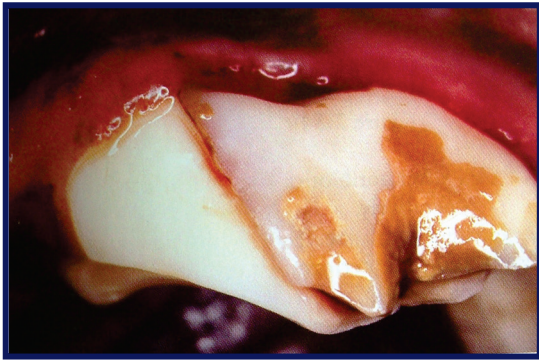
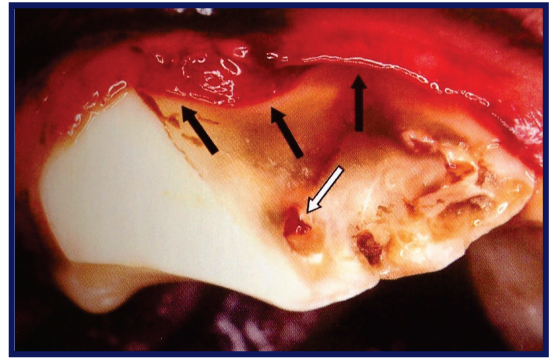


SLAB FRACTURE OF A CHEEK TOOTH

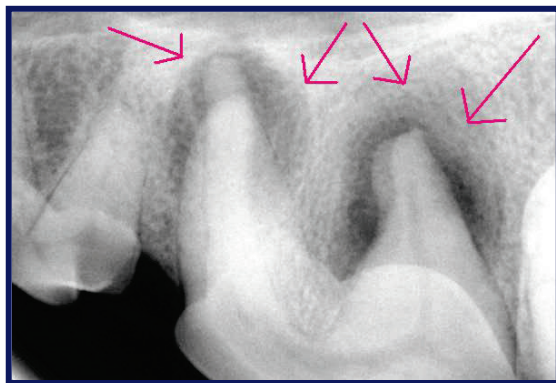
- A slab fracture occurs when a slice of the crown of the tooth separates from the rest
- This type of fracture most commonly occurs on the upper large 4th premolar in dogs that like to chew hard toys such as Nylabones, cow hooves, rocks, etc
- The cause for this is the sideways shearing force of these teeth that is applied when the dogs chews a very hard object
- The fracture often extends under the gumline, and often causes the pulp (the live part of the tooth) to be exposed
- These fractures are extremely painful due to the pulp exposure and often lead to tooth root infection and abscess. The treatment is extraction or root canal.
- In severe cases, a large pus pocket forms on the side of the face, often making owners think the dog was stung by an insect. Shockingly, the pet often acts as if he is comfortable and is still eating



Removal of the tartar on this tooth revealed a large slab fracture that extends into the gum line



The slab segment was removed from the tooth showing the exposed pulp (white arrow) and injury below the gum line (black arrows)



The x-ray of the tooth reveals an abscessed area around two of the roots, as shown by the halo-like areas (pink arrows). This is a very painful infected tooth that needs to be extracted



This dog has moderate swelling of his face below the eye that was due to a tooth root abscess similar to the one in the previous pictures