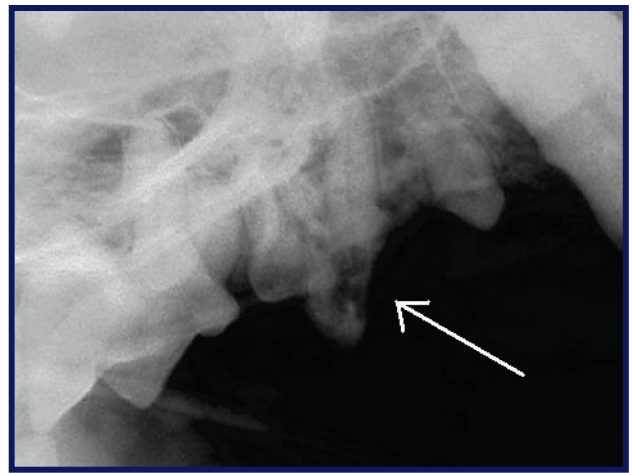


TOOTH RESORPTION

- Dental resorptive lesions are sometimes referred to as “neck lesions”, “cervical line lesions”, or “cat cavities”, even though they are not cavities at all.
- They are most often seen in cats, but they may be seen in dogs, too.
- The causes of dental resorptive lesions are not known. Resorptions usually start under the gum line on the root surface, and the visible part of the tooth often looks normal
- Once a resorptive process extends above the gum line to involve the crown structures, it is very painful and may lead to infection.

In these photos the resorptive lesion is mostly covered by the gums, but the extensive loss of crown and root structure can be seen on the x-ray. This is a very painful tooth that needs to be extracted.



In the photos below is what appears to be a perfectly healthy fang tooth of a cat. The x-ray, however, reveals a large resorptive lesion below the gum line. This tooth will need to be closely monitored. Once the lesion has spread to the area above the gum line, it will need to be extracted as this is very painful. There is no way to prevent these lesions.

