

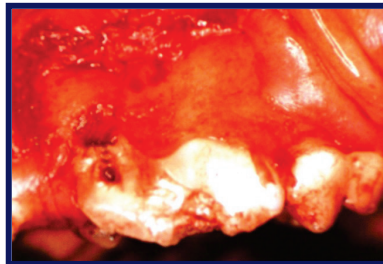
## Surgical Extraction of a Multi-Rooted Tooth

The larger premolar teeth as well as the molars have two to three roots which makes it necessary to cut the tooth into single-rooted sections to avoid breaking of the roots and accidentally leaving them behind in the jaw. Roots that are not completely removed from the jaw can cause infection and significant pain later on.

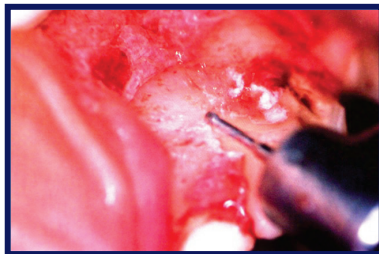
The following is an outline of the surgical removal of a multi-rooted tooth:



The gum tissue around the tooth is cut with a scalpel to create a gum flap



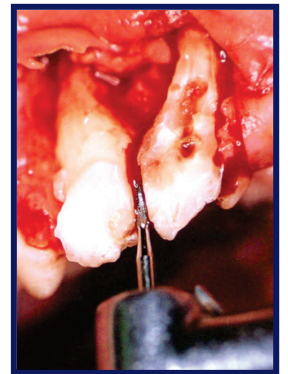
The gum flap has been loosened and pulled back to expose the jaw bone



Removal of the jaw bone covering the tooth roots with a high-speed dental drill



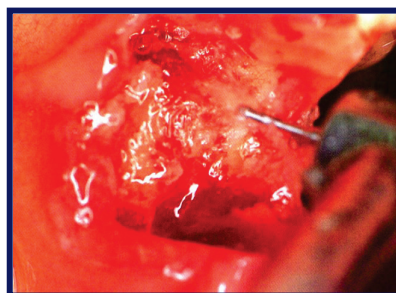
Cutting of the tooth into single-root segments with the water-cooled high speed drill



Loosening of the three single-rooted sections of tooth with a dental elevator



The gum flap is replaced over the jaw bone and sutured in place.



Smoothing of the jaw bone to eliminate sharp edges and infection

